

## \$782,181

### LOT 5034

Land Size: 472m<sup>2</sup>

Frontage: 14m

Depth: 33.72m






## ODESSA 226

4 2 2

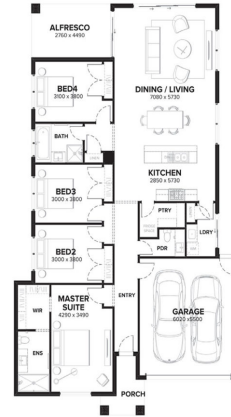


## ODESSA 226

 4  2  2

### INCLUSION LIST:

- Fixed site costs and connections
- Council and developer reqs
- Fully rendered Hebel (facade specific)
- Colorbond panel lift garage door with remote control
- 2590mm high ceilings to ground floor
- Floor coverings throughout
- 20mm Caesarstone benchtops to Kitchen
- 900mm Haier stainless steel oven, cooktop and rangehood
- Haier stainless steel fridge/freezer and dishwasher
- Phoenix chrome or matt black tapware



The peak of modern living.  
[ALIRABERWICK.COM.AU](http://ALIRABERWICK.COM.AU)

WHILE BEST ENDEAVOURS HAVE BEEN USED TO PROVIDE INFORMATION IN THIS PUBLICATION THAT IS TRUE AND ACCURATE, ALIRA, ITS CONSULTANTS, AGENTS AND RELATED ENTITIES ACCEPT NO RESPONSIBILITY AND DISCLAIM ALL LIABILITY IN RESPECT TO ANY ERRORS OR INACCURACIES IT MAY CONTAIN. PROSPECTIVE PURCHASERS SHOULD MAKE THEIR OWN ENQUIRIES TO VERIFY THE INFORMATION CONTAINED HEREIN.