

# ALIRA

AT BERWICK

## HOUSE AND LAND PACKAGE


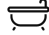

# \$664,530



### LOT 6016

Land Size: 404m<sup>2</sup>  
Frontage: 14.55m  
Depth: 29.98m

### UP-CORAL 191




 3  2  2



The peak of modern living.  
[ALIRABERWICK.COM.AU](http://ALIRABERWICK.COM.AU)

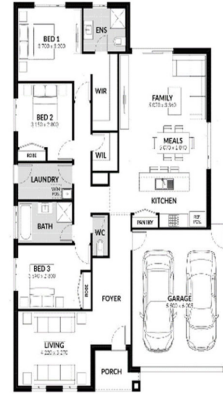
VISIT OUR SALES OFFICE 342-350 Centre Road, Berwick VIC 3806 CONTACT  
TRUDI KERR 03 9684 8150 | [contact@aliraberwick.com.au](mailto:contact@aliraberwick.com.au)

## UP-CORAL 191

 3  2  2

### INCLUSION LIST:

- Spacious Meals and Family Area
- Stainless Steel 600mm Appliances
- Solar Hot Water System
- Chrome finish leversets
- Sectional Garage Door
- Colorbond Roof
- 6 Star Energy Rating
- Bushfire Attack Level 12.5 Included
- Bluescope Steel House Frame
- 50 Year Structural Guarantee
- Developer & Council requirements met
- 2550mm Ceiling Height
- Up - Concrete Driveway up to 30sqm
- Up - Caesarstone Benchtops to Kitchen and Vanities
- Up - Floor Coverings



The peak of modern living.  
[ALIRABERWICK.COM.AU](http://ALIRABERWICK.COM.AU)

WHILE BEST ENDEAVOURS HAVE BEEN USED TO PROVIDE INFORMATION IN THIS PUBLICATION THAT IS TRUE AND ACCURATE, ALIRA, ITS CONSULTANTS, AGENTS AND RELATED ENTITIES ACCEPT NO RESPONSIBILITY AND DISCLAIM ALL LIABILITY IN RESPECT TO ANY ERRORS OR INACCURACIES IT MAY CONTAIN. PROSPECTIVE PURCHASERS SHOULD MAKE THEIR OWN ENQUIRIES TO VERIFY THE INFORMATION CONTAINED HEREIN.