

# ALIRA

AT BERWICK

## HOUSE AND LAND PACKAGE


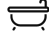

# \$908,030

**Burbank** 

**LOT 6031**

Land Size: 666m<sup>2</sup>  
Frontage: 10m  
Depth: 47.31m

## FITZGERALD 316




 4  2  2



The peak of modern living.  
[ALIRABERWICK.COM.AU](http://ALIRABERWICK.COM.AU)

VISIT OUR SALES OFFICE 342-350 Centre Road, Berwick VIC 3806 CONTACT  
TRUDI KERR 03 9684 8150 | [contact@aliraberwick.com.au](mailto:contact@aliraberwick.com.au)

## FITZGERALD 316

 4  2  2

### INCLUSION LIST:

Site Costs Including Rock Assurance

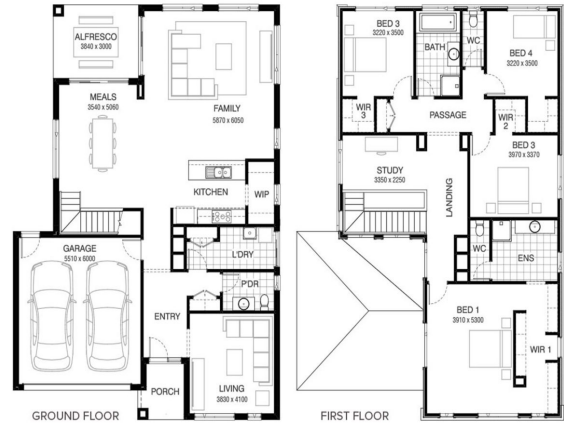
Council and Alira Developer Requirements

20mm Stone to Kitchen & 900mm Franke Stainless Steel Appliances

Quality Assured With Our 30-Year Structural Guarantee and 15-Month Maintenance Pledge

\$31,500 Worth of Upgrades to Choose From & Ability to Customise Your Home

Style Your Home With Expert Interior Designers At Our Edge Selection Studio



The peak of modern living.  
[ALIRABERWICK.COM.AU](http://ALIRABERWICK.COM.AU)

WHILE BEST ENDEAVOURS HAVE BEEN USED TO PROVIDE INFORMATION IN THIS PUBLICATION THAT IS TRUE AND ACCURATE, ALIRA, ITS CONSULTANTS, AGENTS AND RELATED ENTITIES ACCEPT NO RESPONSIBILITY AND DISCLAIM ALL LIABILITY IN RESPECT TO ANY ERRORS OR INACCURACIES IT MAY CONTAIN. PROSPECTIVE PURCHASERS SHOULD MAKE THEIR OWN ENQUIRIES TO VERIFY THE INFORMATION CONTAINED HEREIN.