

# ALIRA

AT BERWICK

## HOUSE AND LAND PACKAGE

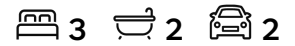
# \$591,800

### LOT 6000

Land Size: 325m<sup>2</sup>  
Frontage: 13m  
Depth: 25m






## WAVE 19



The peak of modern living.  
[ALIRABERWICK.COM.AU](http://ALIRABERWICK.COM.AU)

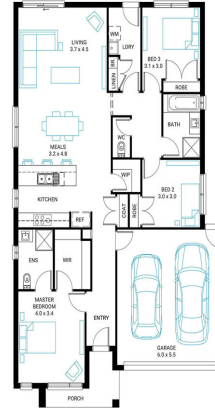
VISIT OUR SALES OFFICE 342-350 Centre Road, Berwick VIC 3806 CONTACT  
TRUDI KERR 03 9684 8150 | [contact@aliraberwick.com.au](mailto:contact@aliraberwick.com.au)

## WAVE 19

 3  2  2

### INCLUSION LIST:

- 'Fisher & Paykel' stainless steel appliances (900mm)
- Engineered stone benchtops with 20mm edge profile to Kitchen.
- Laminate overhead cupboards with concealed rangehood to Kitchen
- Towel rails, soap dishes & toilet roll holders to wet areas
- Tiled shower bases to Bathroom and Ensuite
- Built in laundry laminate unit with inset trough
- Flooring throughout (tiles and carpet)
- 'olorbond' Metal Roof
- 'Decowood' timberlook sectional overhead door with automated lifter and remote controls
- Insect Screens with fibreglass mesh to all openable windows.
- Gas ducted heating with ceiling outlets to Bedrooms and all Living areas.
- 25 Year Structural Warranty
- 6 Star Energy Rating



The peak of modern living.  
[ALIRABERWICK.COM.AU](http://ALIRABERWICK.COM.AU)

WHILE BEST ENDEAVOURS HAVE BEEN USED TO PROVIDE INFORMATION IN THIS PUBLICATION THAT IS TRUE AND ACCURATE, ALIRA, ITS CONSULTANTS, AGENTS AND RELATED ENTITIES ACCEPT NO RESPONSIBILITY AND DISCLAIM ALL LIABILITY IN RESPECT TO ANY ERRORS OR INACCURACIES IT MAY CONTAIN. PROSPECTIVE PURCHASERS SHOULD MAKE THEIR OWN ENQUIRIES TO VERIFY THE INFORMATION CONTAINED HEREIN.