

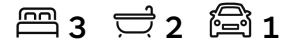
\$476,400



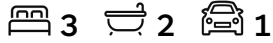
LOT 6010

Land Size: 231m²
Frontage: 10.5m
Depth: 22m

PROTEA 14

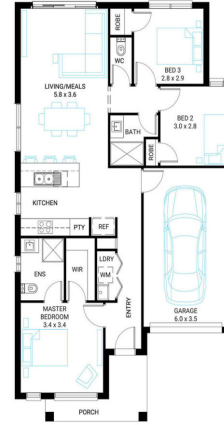


PROTEA 14



INCLUSION LIST:

- 'Fisher & Paykel' stainless steel appliances (600mm)
- Laminate overhead cupboards with concealed rangehood to Kitchen
- Towel rails, soap dishes & toilet roll holders to wet areas
- Tiled shower bases to Bathroom and Ensuite
- Laminate or tiled flooring to Living Room areas
- Carpet to all Bedroom areas
- 'Colorbond' sectional overhead door with automated lifter and remote controls
- Insect Screens with fibreglass mesh to all openable windows.
- Gas ducted heating with ceiling outlets to Bedrooms and all Living areas.
- 25 Year Structural Warranty
- 6 Star Energy Rating



The peak of modern living.
ALIRABERWICK.COM.AU

WHILE BEST ENDEAVOURS HAVE BEEN USED TO PROVIDE INFORMATION IN THIS PUBLICATION THAT IS TRUE AND ACCURATE, ALIRA, ITS CONSULTANTS, AGENTS AND RELATED ENTITIES ACCEPT NO RESPONSIBILITY AND DISCLAIM ALL LIABILITY IN RESPECT TO ANY ERRORS OR INACCURACIES IT MAY CONTAIN. PROSPECTIVE PURCHASERS SHOULD MAKE THEIR OWN ENQUIRIES TO VERIFY THE INFORMATION CONTAINED HEREIN.