

ALIRA

AT BERWICK

HOUSE AND LAND PACKAGE


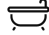

\$834,330

Burbank 

LOT 23

Land Size: 446m²
Frontage: 12.82m
Depth: 23m

FITZGERALD 316




 4  2  2



The peak of modern living.
ALIRABERWICK.COM.AU

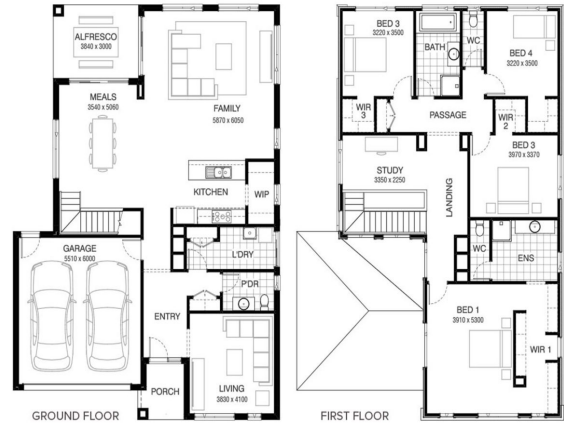
VISIT OUR SALES OFFICE 342-350 Centre Road, Berwick VIC 3806 CONTACT
TRUDI KERR 03 9684 8150 | contact@aliraberwick.com.au

FITZGERALD 316

 4
  2
  2

INCLUSION LIST:

- Site Costs Including Rock Assurance
- Council and Developer Requirements allowance
- 12 Month Price Freeze With Option To Extend
- Quality Assured With Our 30-Year Structural Guarantee and 15-Month Maintenance Pledge
- Multiple Floorplans and Facade Options Available
- Style Your Home With Expert Interior Designers At Our Edge Selection Studio



The peak of modern living.
ALIRABERWICK.COM.AU

WHILE BEST ENDEAVOURS HAVE BEEN USED TO PROVIDE INFORMATION IN THIS PUBLICATION THAT IS TRUE AND ACCURATE, ALIRA, ITS CONSULTANTS, AGENTS AND RELATED ENTITIES ACCEPT NO RESPONSIBILITY AND DISCLAIM ALL LIABILITY IN RESPECT TO ANY ERRORS OR INACCURACIES IT MAY CONTAIN. PROSPECTIVE PURCHASERS SHOULD MAKE THEIR OWN ENQUIRIES TO VERIFY THE INFORMATION CONTAINED HEREIN.