



Alira Estate
Cupples Crescent, Berwick
Lot 3048

Facade: Nest

House: 15.09 sq **Land:** 281 m2

 3
  2
  1
  2

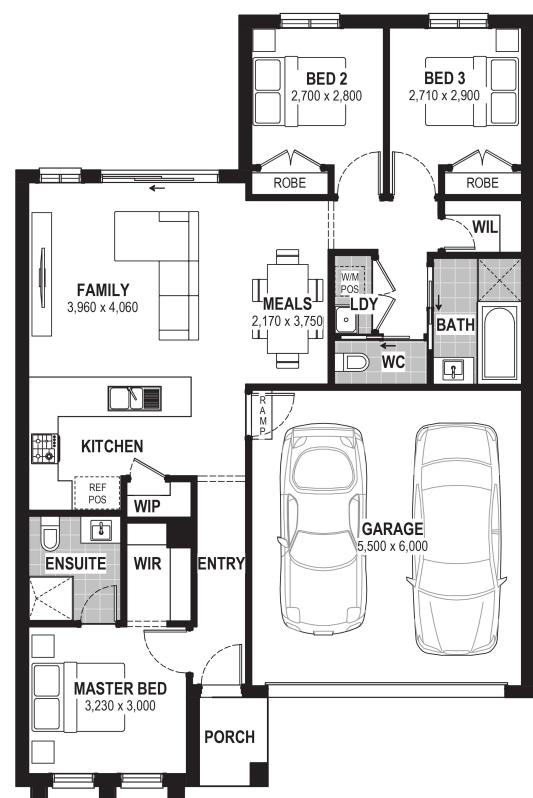
Sutherland 15

Inclusions

- Bluescope Steel House Frame
- Colorbond Roof with Sarking
- 7 Star Energy Efficient
- European-styled (uPVC) Double Glazed Windows & Doors
- Tiled Splashback to Kitchen
- Range of Colour Schemes
- Flyscreens with Aluminium Mesh
- Remote Garage Door with Openers
- Bushfire Compliance up to BAL 12.5
- 50 Year Structural Guarantee
- Developer Guidelines Included
- Laminate Flooring & Carpet Throughout
- Site Costs Allowance Included
- 2550mm Ceiling Height
- 450mm Eaves
- 900mm Appliances
- Blockout Roller Blinds
- Caesarstone Benchtops to Kitchen & Vanities
- Concrete Driveway up to 35qm
- Clothesline

Contact:

John Tipene
0497 072 187
john.tipene@jgkinghomes.com.au



*Conditions apply. Speak to your New Home Advisor for further details